

# ***EMISSION CONTROL INFORMATION***

## **CONTENTS**

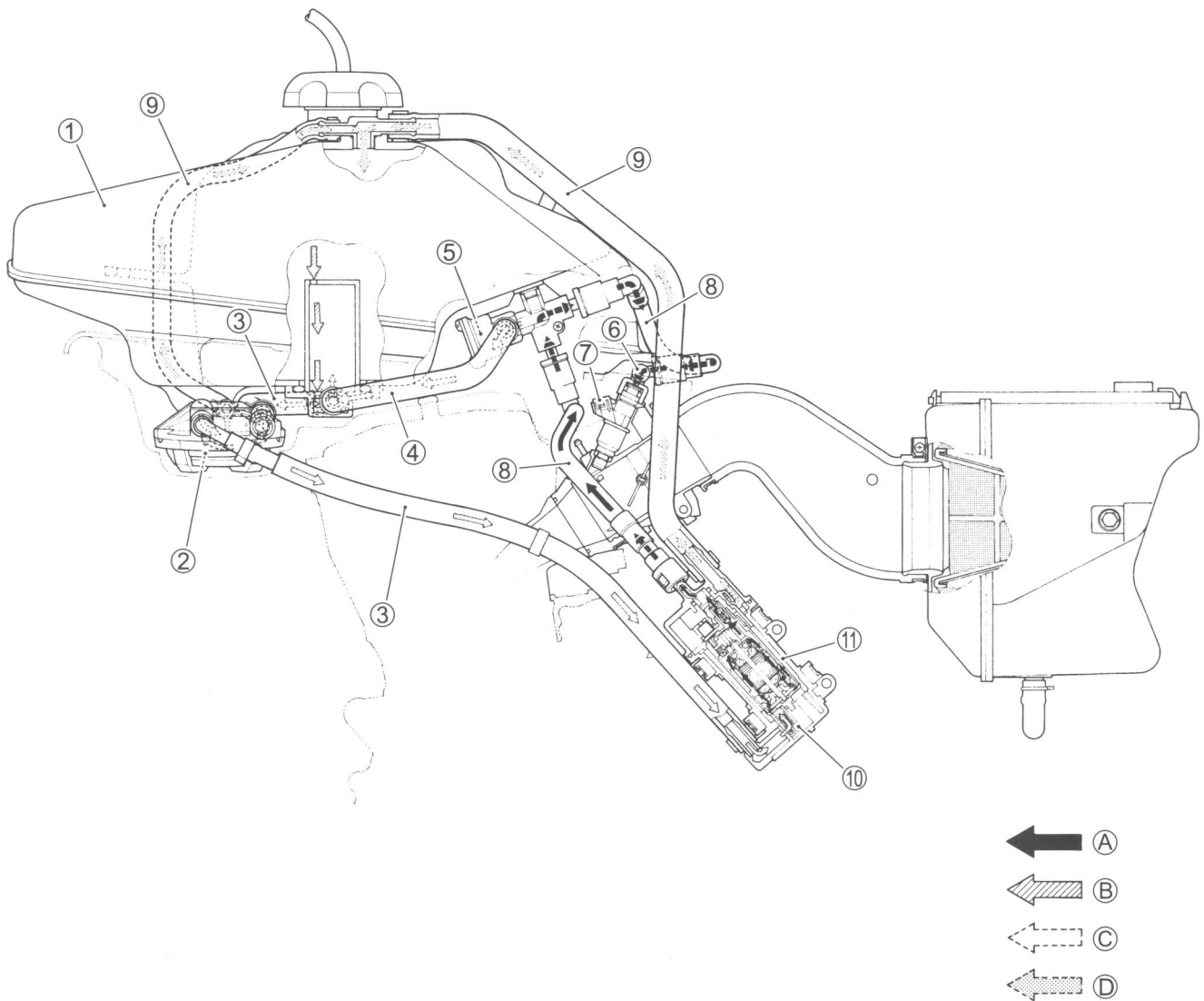
<b><i>EMISSION CONTROL SYSTEMS.....</i></b>	<b><i>10- 2</i></b>
<b><i>FUEL INJECTION SYSTEM.....</i></b>	<b><i>10- 2</i></b>
<b><i>CRANKCASE EMISSION CONTROL SYSTEM.....</i></b>	<b><i>10- 3</i></b>

## EMISSION CONTROL SYSTEMS

### FUEL INJECTION SYSTEM

LT-R450 vehicles are equipped with a fuel injection system for emission level control.

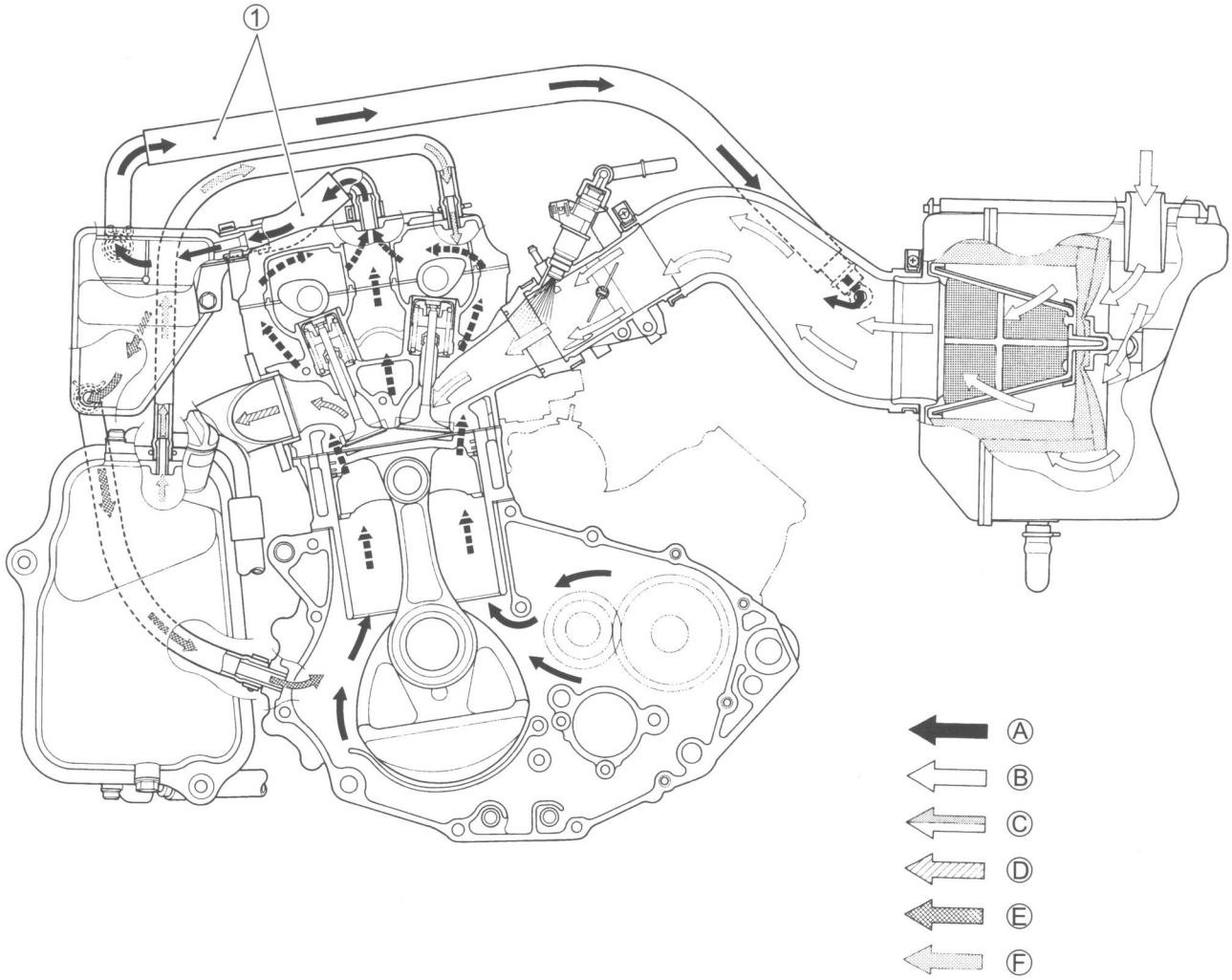
This fuel injection system is precision designed, manufactured and adjusted to comply with the applicable emission limits. With a view to reducing CO, NOX and HC, all of the fuel injection volumes are stringently controlled with the programmed injection maps in the ECM by varying engine conditions. Adjusting, interfering with, improper replacement, or resetting of any of the fuel injection components may adversely affect injection performance and cause the vehicle to exceed the exhaust emission level limits. If unable to effect repairs, contact the distributor's representative for further technical information and assistance.



① Fuel tank	⑥ Fuel delivery pipe	⑪ Fuel pump
② Fuel filter (For fuel valve)	⑦ Fuel injector	Ⓐ Pressurized fuel
③ Fuel hose	⑧ Fuel feed hose	Ⓑ Before-pressurized fuel
④ Fuel return hose	⑨ Fuel vapor return hose	Ⓒ Relieved fuel
⑤ Fuel pressure regulator	⑩ Fuel filter (For fuel pump)	Ⓓ Fuel vapor

### CRANKCASE EMISSION CONTROL SYSTEM

The engine is equipped with a PCV system. Blow-by gas in the engine is constantly drawn into the crankcase, which is returned to the combustion chamber through the PCV (breather) hose, air cleaner and throttle body.



① PCV (breather) hose	③ FUEL/AIR MIXTURE	⑥ OVER-FLOW OIL
② BLOW-BY GAS	④ EXHAUST GAS	
⑤ FRESH AIR	⑤ SEPARATED RETURN OIL	

